

INSTRUCTION SHEET

OFF VEHICLE CARBURETOR SERVICE

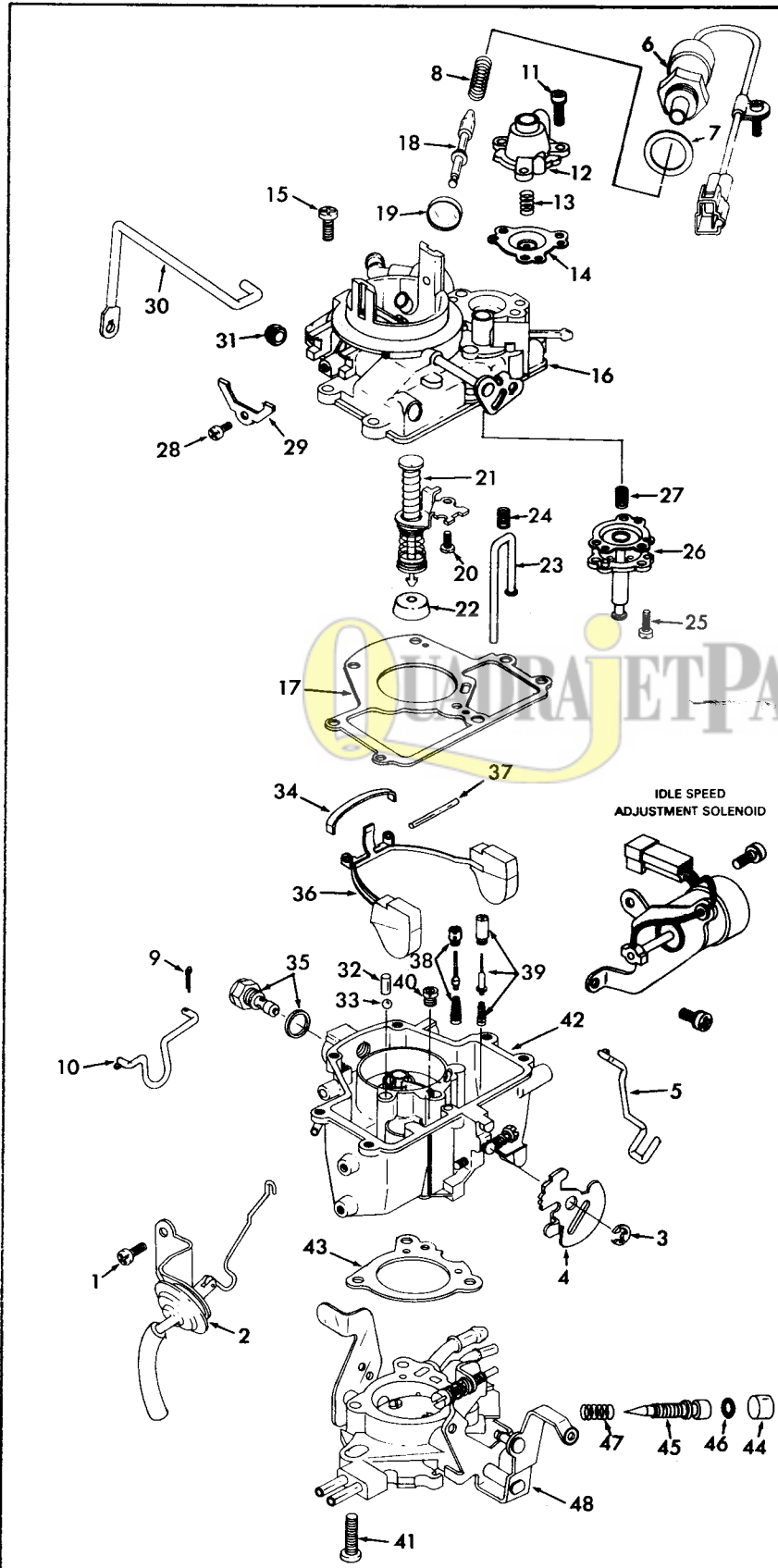
HOLLEY MODEL—6145

50-609-5

(VACUUM FEEDBACK)

GENERAL EXPLODED VIEW

THE GENERAL DESIGN AND PARTS SHOWN WILL VARY TO
INDIVIDUAL UNITS COVERED ON THIS INSTRUCTION SHEET.



DISASSEMBLY

USE THE EXPLODED VIEW AS A GUIDE. THE NUMERICAL SEQUENCE MAY GENERALLY BE FOLLOWED TO DISSEMBLE UNIT FAR ENOUGH TO PERMIT CLEANING AND INSPECTION. TO REMOVE VENT VALVE STEM (18) PULL IT OUT OF RUBBER VENT VALVE (19). MAIN WELL TUBE IS NOT REMOVABLE. TAKE EXTREME CARE NOT TO BEND OR DAMAGE TUBE. TO REMOVE IDLE NEEDLE PLUG (44) DRILL A 1/8" HOLE AT A 45° ANGLE TOWARDS PLUG ABOUT 1/4" IN FROM EDGE OF HOUSING. INSERT A BLUNT PUNCH IN HOLE AND DRIVE OUT PLUG.

A NITROPHYL FLOAT (NON METAL) CAN BE CHECKED FOR FUEL ABSORPTION BY LIGHTLY SQUEEZING BETWEEN FINGERS. IF WETNESS APPEARS ON SURFACE OR FLOAT FEELS HEAVY (CHECK WITH KNOWN GOOD FLOAT) REPLACE THE FLOAT ASSEMBLY.

NOMENCLATURE

REF. NO.	REF. NO.
1. SCREW (2)—CHOKO PULL OFF	25. SCREW & LOCKWASHER (3)—ACTUATOR
2. CHOKO PULL-OFF & HOSE ASSY.	26. DIAPHRAGM ACTUATOR ASSY.
3. E-CLIP—FAST IDLE CAM	27. SPRING—DIAPHRAGM
4. CAM—FAST IDLE	28. SCREW—PUMP ROD CLAMP
5. ROD—FAST IDLE	29. CLAMP—PUMP ROD
6. SOLENOID ASSY.—BOWL VENT	30. ROD—PUMP OPERATING
7. GASKET—SOLENOID	31. GROMMET—PUMP ROD
8. SPRING—SOLENOID PLUNGER	32. WEIGHT—PUMP DISC. BALL
9. COTTER PIN—PUMP LINK	33. BALL—PUMP DISC.
10. LINK—PUMP	34. RETAINER—FLOAT PIN
11. SCREW & LOCKWASHER (3)—COVER	35. NEEDLE & SEAT ASSY.
12. COVER—FEED BACK DIAPHRAGM	36. FLOAT ASSY.
13. SPRING—DIAPHRAGM	37. PIN—FLOAT
14. DIAPHRAGM ASSY.—FEED BACK	38. POWER VALVE ASSY.—MECHANICAL (SHORT)
15. SCREW & LOCKWASHER (6)—BOWL COVER	39. POWER VALVE ASSY.—VACUUM (LONG)
16. BOWL COVER ASSY.	40. JET—MAIN
17. GASKET—BOWL COVER	41. SCREW & LOCKWASHER (3)—THROTTLE BODY
18. PLUNGER STEM—VENT VALVE	42. BOWL ASSY.
19. VALVE—BOWL VENT	43. GASKET—THROTTLE BODY
20. SCREW & LOCKWASHER—PUMP BRACKET	44. PLUG—IDLE NEEDLE
21. PUMP STEM & BRACKET ASSY.	45. NEEDLE—IDLE ADJ.
22. CUP—PUMP	46. O-RING—IDLE NEEDLE
23. ROD—MECHANICAL POWER VALVE	47. SPRING—IDLE NEEDLE
24. SPRING—ROD	48. THROTTLE BODY ASSY.

CLEANING

CLEANING MUST BE DONE WITH CARBURETOR DISASSEMBLED. SOAK PARTS LONG ENOUGH TO SOFTEN AND REMOVE ALL FOREIGN MATERIAL. USE A CARBURETOR CLEANING SOLVENT. MAKE CERTAIN THE THROTTLE BORES ARE FREE OF ALL CARBON AND VARNISH DEPOSITS. RINSE OFF IN A SUITABLE SOLVENT. BLOW OUT ALL PASSAGES IN CASTINGS WITH COMPRESSED AIR, AND CHECK CAREFULLY TO INSURE THOROUGH CLEANING OF OBSCURE AREAS. CAUTION: DO NOT SOAK SOLENOID (6), CHOKO PULL-OFF (2), FLOAT (36) OR PARTS MADE OF RUBBER IN CLEANING SOLVENTS.

REASSEMBLY

REASSEMBLE IN REVERSE ORDER OF DISASSEMBLY. NOTE SPECIAL INSTRUCTIONS AND FOLLOW NUMERICAL OUTLINE IN MAKING ADJUSTMENTS NECESSARY FOR CARBURETOR BEING SERVICED.

SPECIAL INSTRUCTIONS

IDLE ADJ. NEEDLE (45) — TURN IN UNTIL LIGHTLY SEATED. THEN BACK OUT 2 TURNS (DO NOT INSTALL PLUG (44) AT THIS TIME).

THROTTLE BODY SCREW (41) — TIGHTEN ALTERNATELY A LITTLE AT A TIME TO COMPRESS THE GASKET EVENLY. TORQUE TO 30 INCH LBS.

BOWL COVER SCREWS (15) — TIGHTEN ALTERNATELY A LITTLE AT A TIME TO COMPRESS THE GASKET EVENLY. TORQUE TO 30 INCH LBS.

INSTRUCTION SHEET

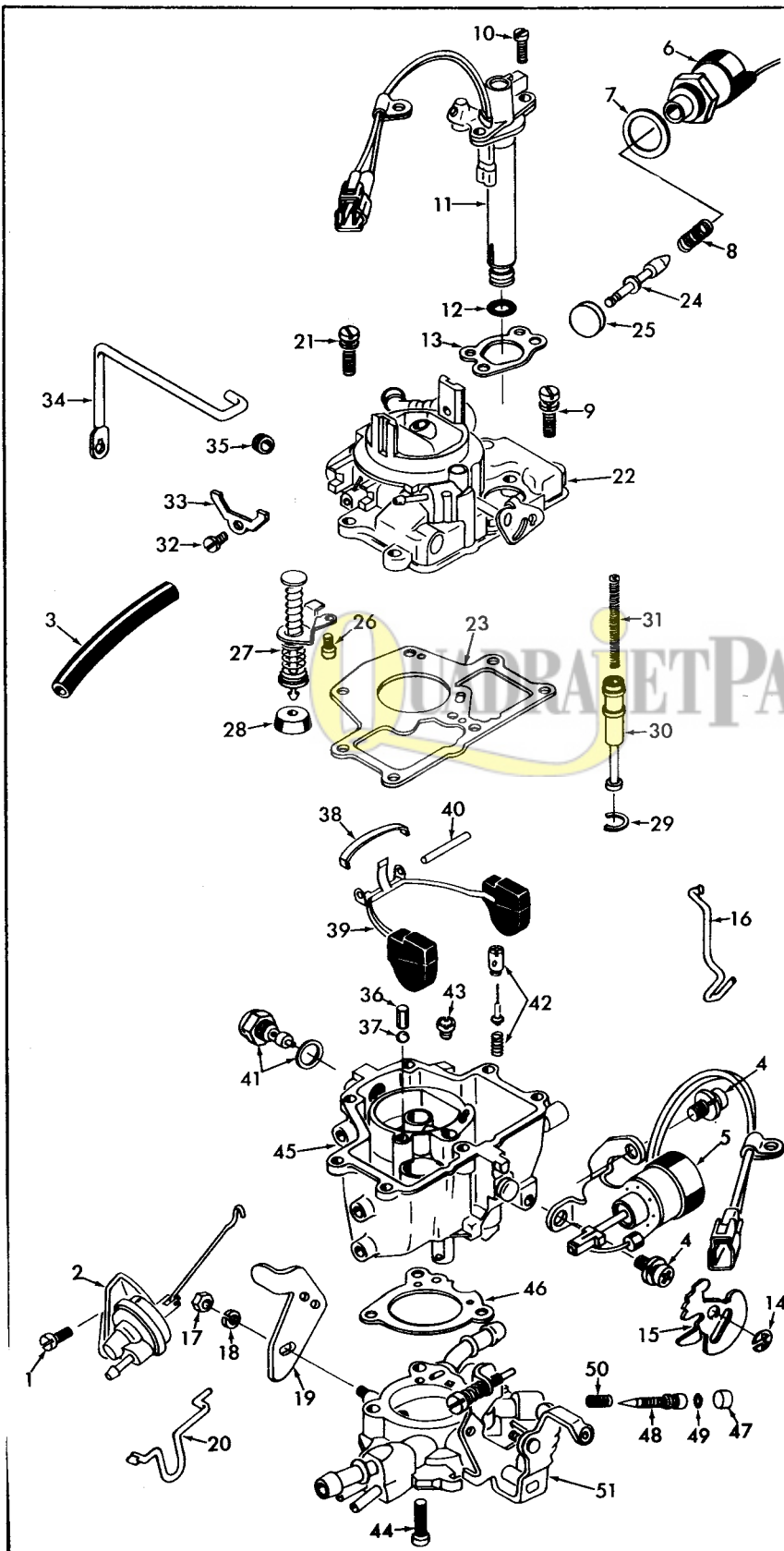
OFF VEHICLE CARBURETOR SERVICE

HOLLEY MODEL - 6145

(ELECTRONIC FEEDBACK)

GENERAL EXPLODED VIEW

THE GENERAL DESIGN AND PARTS SHOWN WILL VARY TO INDIVIDUAL UNITS COVERED ON THIS INSTRUCTION SHEET.



DISASSEMBLY

USE THE EXPLODED VIEW AS A GUIDE. THE NUMERICAL SEQUENCE MAY GENERALLY BE FOLLOWED TO DISASSEMBLE UNIT FAR ENOUGH TO PERMIT CLEANING AND INSPECTION. TO REMOVE VENT VALVE STEM (24) PULL IT OUT OF RUBBER VENT VALVE (25). MAIN WELL TUBE IS NOT REMOVABLE. TAKE EXTREME CARE NOT TO BEND OR DAMAGE TUBE. REMOVE STAKING FOR EASY REMOVAL OF POWER PISTON RETAINER (29). TO REMOVE IDLE NEEDLE PLUG (47) DRILL A 1/8" HOLE AT A 45° ANGLE TOWARDS PLUG ABOUT 1/4" IN FROM EDGE OF HOUSING. INSERT A BLUNT PUNCH IN HOLE AND DRIVE OUT PLUG.

A NITROPHYL FLOAT (NON METAL) CAN BE CHECKED FOR FUEL ABSORPTION BY LIGHTLY SQUEEZING BETWEEN FINGERS. IF WETNESS APPEARS ON SURFACE OR FLOAT FEELS HEAVY (CHECK WITH KNOWN GOOD FLOAT) REPLACE THE FLOAT ASSEMBLY.

NOMENCLATURE

REF. NO.	REF. NO.
1. SCREW (2)-CHOKE PULL OFF	27. PUMP STEM & BRACKET ASSY.
2. CHOKE PULL OFF & HOSE ASSY.	28. CUP-PUMP
3. VAC. HOSE-POWER VALVE	29. RETAINER-POWER PISTON
4. SCREW & LKWSHR (2)-SOLENOID	30. POWER PISTON
5. IDLE STOP SOLENOID ASSY.	31. SPRING-POWER PISTON
6. SOLENOID ASSY.-BOWL VENT	32. SCREW-PUMP ROD CLAMP
7. GASKET-SOLENOID	33. CLAMP-PUMP ROD
8. SPRING-SOLENOID PLUNGER	34. ROD-PUMP OPERATING
9. SCREW & LKWSHR -WIRE CLAMP	35. GROMMET-PUMP ROD
10. SCREW & LKWSHR (2)-SOLENOID	36. WEIGHT-PUMP DISC. BALL
11. DUTY CYCLE SOLENOID ASSY.	37. BALL-PUMP DISC
12. O-RING-SOLENOID	38. RETAINER-FLOAT PIN
13. GASKET-SOLENOID	39. FLOAT ASSY.
14. E-CLIP-FAST IDLE CAM	40. PIN-FLOAT
15. CAM-FAST IDLE	41. NEEDLE & SEAT ASSY.
16. LINK-FAST IDLE CAM	42. POWER VALVE ASSY.
17. NUT-THROTTLE LEVER	43. JET-MAIN
18. LKWSHR -THROTTLE LEVER	44. SCREW & LKWSHR. (3)-THROTTLE BODY
19. LEVER-THROTTLE	45. BOWL ASSY.
20. LINK-PUMP	46. GASKET-THROTTLE BODY
21. SCREW & LKWSHR. (6)-BOWL COVER	47. PLUG-IDLE NEEDLE
22. BOWL COVER ASSY.	48. NEEDLE-IDLE ADJ.
23. GASKET-BOWL COVER	49. O-RING-IDLE NEEDLE
24. PLUNGER STEM-VENT VALVE	50. SPRING-IDLE NEEDLE
25. VALVE-BOWL VENT	51. THROTTLE BODY ASSY.
26. SCREW & LKWSHR.-PUMP BRACKET	

CLEANING

CLEANING MUST BE DONE WITH CARBURETOR DISASSEMBLED. SOAK PARTS LONG ENOUGH TO SOFTEN AND REMOVE ALL FOREIGN MATERIAL. USE A CARBURETOR CLEANING SOLVENT. MAKE CERTAIN THE THROTTLE BORES ARE FREE OF ALL CARBON AND VARNISH DEPOSITS. RINSE OFF IN SUITABLE SOLVENT. BLOW OUT ALL PASSAGES IN CASTINGS WITH COMPRESSED AIR, AND CHECK CAREFULLY TO INSURE THOROUGH CLEANING OF OBSCURE AREAS. CAUTION: DO NOT SOAK SOLENOIDS (6), (11), CHOKE PULL-OFF (2), FLOAT (39), OR PARTS MADE OF RUBBER IN CLEANING SOLVENT.

REASSEMBLY

REASSEMBLE IN REVERSE ORDER OF DISASSEMBLY. NOTE SPECIAL INSTRUCTIONS AND FOLLOW NUMERICAL OUTLINE IN MAKING ADJUSTMENTS NECESSARY FOR CARBURETOR BEING SERVICED.

SPECIAL INSTRUCTIONS

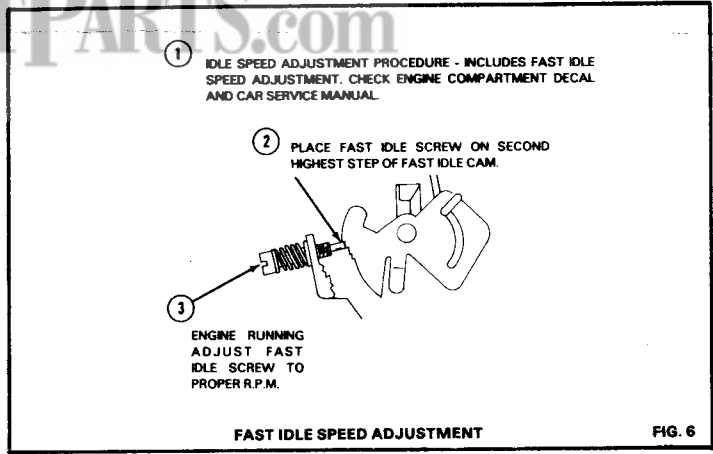
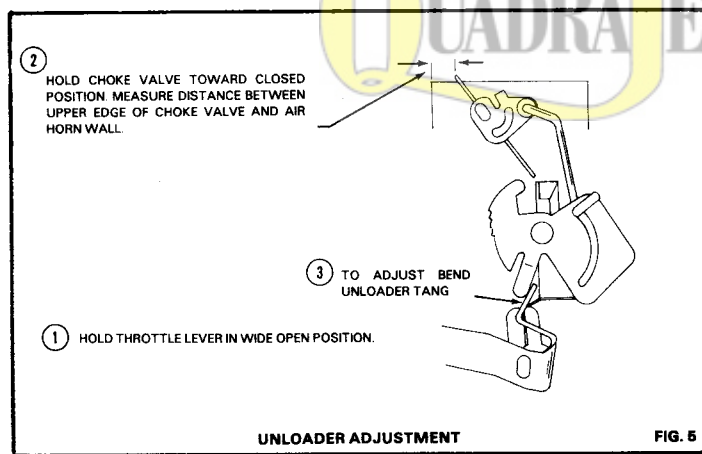
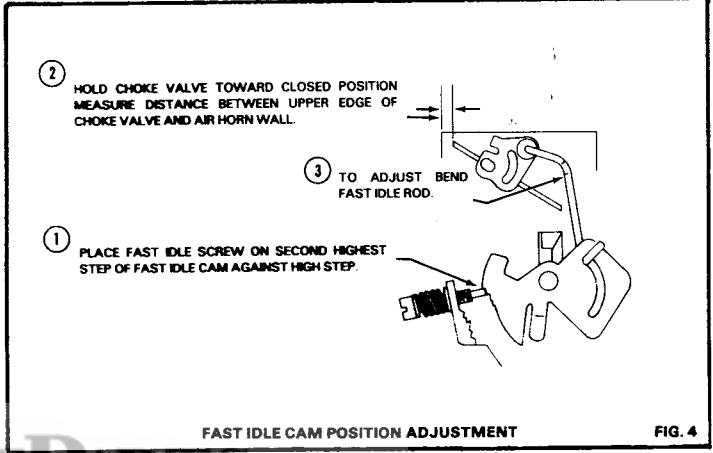
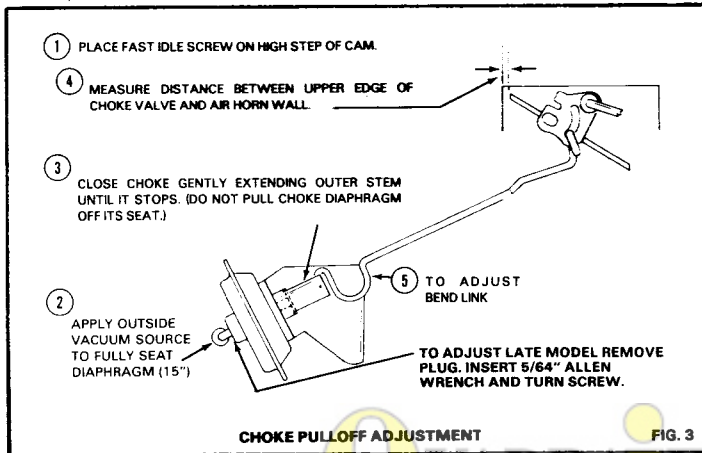
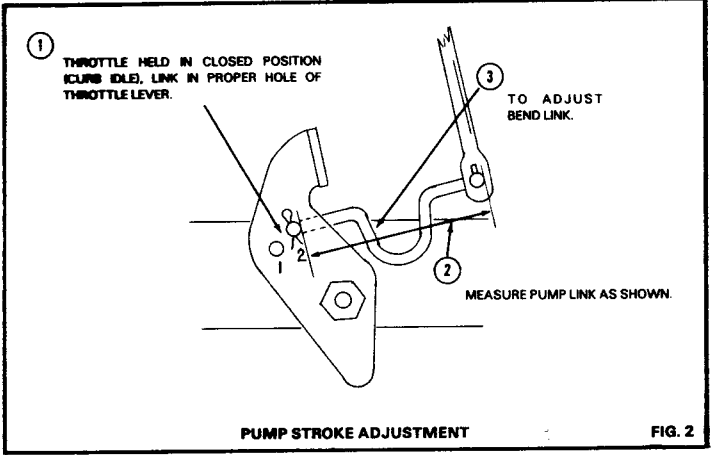
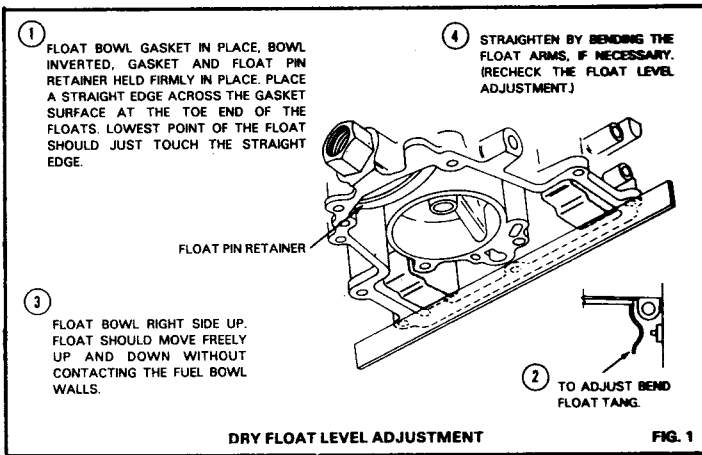
IDLE ADJ. NEEDLE (48)-TURN IN UNTIL LIGHTLY SEATED. THEN BACK OUT 2 TURNS (DO NOT INSTALL PLUG (47) AT THIS TIME).

THROTTLE BODY SCREW (44)-TIGHTEN ALTERNATELY A LITTLE AT A TIME TO COMPRESS THE GASKET EVENLY. TORQUE TO 30 INCH LBS.

BOWL COVER SCREWS (21)-TIGHTEN ALTERNATELY A LITTLE AT A TIME TO COMPRESS THE GASKET EVENLY. TORQUE TO 30 INCH LBS.

POWER PISTON RETAINER (29)-INSTALL SPRING AND PISTON, SEAT RETAINER AND STAKE LIGHTLY WITH A SUITABLE TOOL.

ADJUSTMENTS



ADJUSTMENT DATA TABLE.

YEAR	APPLICATION	FLOAT LEVEL	PUMP ADJ.		CHOKE PULLOFF	FAST IDLE CAM	UNLOADER	FAST IDLE R.P.M.
			HOLE	LINK				
CHRYSLER PRODUCTS	1981-82 PASSENGER CAR	FLUSH *	NO. 2	1.615"	.150"	.090"	.250"	2000
	225" ENG.	FLUSH *	NO. 2	1.720"	.150"	.090"	.250"	2000
1983 TRUCK	M/T	225" ENG.	NO. 2	1.700"	.150"	.090"	.250"	1600
		A/T	NO. 2	1.610"	.150"	.090"	.250"	1600
1984 TRUCK	225" ENG.	FLUSH*	NO. 2	1.610"	.150"	.070"	.250"	1600
1985-87 TRUCK	M/T	225" ENG.	NO. 2	1.750"	.150"	.060"	.250"	1600
		A/T	NO. 2	1.750"	.150"	.070"	.250"	1600

*WITH BOWL COVER GASKET IN PLACE

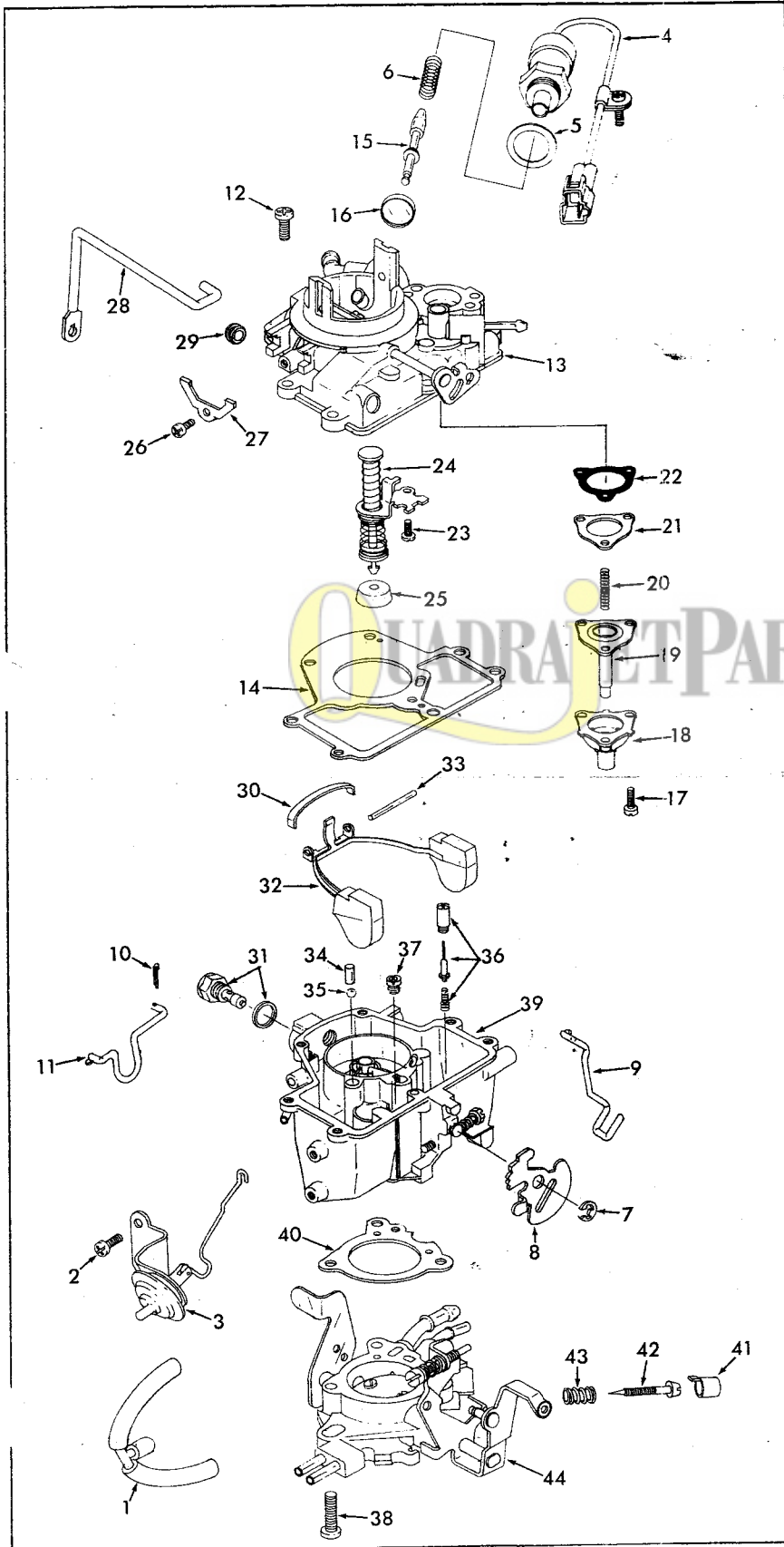
INSTRUCTION SHEET

OFF VEHICLE CARBURETOR SERVICE

HOLLEY MODEL - 1945

GENERAL EXPLODED VIEW

THE GENERAL DESIGN AND PARTS SHOWN WILL VARY TO
INDIVIDUAL UNITS COVERED ON THIS INSTRUCTION SHEET.



DISASSEMBLY

USE THE EXPLODED VIEW AS A GUIDE. THE NUMERICAL SEQUENCE MAY GENERALLY BE FOLLOWED TO DISASSEMBLE UNIT FAR ENOUGH TO PERMIT CLEANING AND INSPECTION. TO REMOVE VENT VALVE STEM (15) PULL IT OUT OF RUBBER VENT VALVE (16). MAIN WELL TUBE IS NOT REMOVABLE. TAKE EXTREME CARE NOT TO BEND OR DAMAGE TUBE. TO REMOVE IDLE NEEDLE PLUG DRILL A 1/8" HOLE AT A 45° ANGLE TOWARDS PLUG ABOUT 1/4" IN FROM EDGE OF HOUSING. INSERT A BLUNT PUNCH IN HOLE AND DRIVE OUT PLUG.

NOMENCLATURE

REF. NO.	REF. NO.
1. HOSE - CHOKE PULL-OFF	23. SCREW & LOCKWASHER - PUMP BRACKET
2. SCREW (2) - CHOKE PULL-OFF	24. PUMP STEM & BRACKET ASSY.
3. CHOKE PULL-OFF & LINK ASSY.	25. CUP - PUMP
4. SOLENOID ASSY - BOWL VENT	26. SCREW - PUMP ROD CLAMP
5. GASKET - SOLENOID	27. CLAMP - PUMP ROD
6. SPRING - SOLENOID	28. ROD - PUMP OPERATING
7. E-CLIP - FAST IDLE CAM	29. GROMMET - PUMP ROD
8. CAM - FAST IDLE	30. RETAINER - FLOAT PIN
9. ROD - FAST IDLE	31. NEEDLE & SEAT ASSY.
10. COTTER PIN - PUMP LINK	32. FLOAT ASSEMBLY
11. LINK - PUMP	33. PIN - FLOAT
12. SCREW & LOCKWASHER (6) - BOWL COVER	34. WEIGHT - PUMP DISC. BALL
13. BOWL COVER ASSY.	35. BALL - PUMP DISC.
14. GASKET - BOWL COVER	36. POWER VALVE ASSY.
15. PLUNGER STEM - VENT VALVE	37. JET - MAIN
16. VALVE - BOWL VENT	38. SCREW & LOCKWASHER (3) - THROTTLE BODY
17. SCREW & LOCKWASHER (3) - ACTUATOR	39. BOWL ASSY.
18. HOUSING - ACTUATOR DIAPHRAGM ASSY.	40. GASKET - THROTTLE BODY
19. DIAPHRAGM ASSY - ACTUATOR	41. CAP - IDLE LIMITER
20. SPRING - DIAPHRAGM	42. NEEDLE - IDLE ADJUSTING
21. SPACER - ACTUATOR	43. SPRING - IDLE ADJ. NEEDLE
22. GASKET - SPACER	44. THROTTLE BODY ASSY.

CLEANING

CLEANING MUST BE DONE WITH CARBURETOR DISASSEMBLED. SOAK PARTS LONG ENOUGH TO SOFTEN AND REMOVE ALL FOREIGN MATERIAL. USE A CARBURETOR CLEANING SOLVENT. MAKE CERTAIN THE THROTTLE BORES ARE FREE OF ALL CARBON AND VARNISH DEPOSITS. RINSE OFF IN A SUITABLE SOLVENT. BLOW OUT ALL PASSAGES IN CASTINGS WITH COMPRESSED AIR, AND CHECK CAREFULLY TO INSURE THOROUGH CLEANING OF OBSCURE AREAS. CAUTION: DO NOT SOAK SOLENOID (4), CHOKE PULL-OFF (3), FLOAT (32) OR PARTS MADE OF RUBBER IN CLEANING SOLVENTS.

REASSEMBLY

REASSEMBLE IN REVERSE ORDER OF DISASSEMBLY. NOTE SPECIAL INSTRUCTIONS AND FOLLOW NUMERICAL OUTLINE IN MAKING ADJUSTMENTS NECESSARY FOR CARBURETOR BEING SERVICED.

SPECIAL INSTRUCTIONS

IDLE ADJ. NEEDLE (42) - TURN IN UNTIL LIGHTLY SEATED, THEN BACK OUT 2 TURNS. (DO NOT INSTALL LIMITER CAP AT THIS TIME).

THROTTLE BODY SCREWS (38) - TIGHTEN ALTERNATELY A LITTLE AT A TIME TO COMPRESS THE GASKET EVENLY. TORQUE TO 30 INCH LBS.

BOWL COVER SCREWS (12) - TIGHTEN ALTERNATELY A LITTLE AT A TIME TO COMPRESS THE GASKET EVENLY. TORQUE TO 30 INCH LBS.

A NITROPHYL FLOAT (NON METAL) CAN BE CHECKED FOR FUEL ABSORPTION BY LIGHTLY SQUEEZING BETWEEN FINGERS. IF WETNESS APPEARS ON SURFACE OR FLOAT FEELS HEAVY (CHECK WITH KNOWN GOOD FLOAT) REPLACE THE FLOAT ASSEMBLY.

ADJUSTMENTS

1 FLOAT BOWL GASKET IN PLACE BOWL INVERTED. GASKET AND FLOAT PIN RETAINER HELD FIRMLY IN PLACE. PLACE A STRAIGHT EDGE ACROSS THE GASKET SURFACE AT THE TOE END OF THE FLOATS. LOWEST POINT OF THE FLOAT SHOULD JUST TOUCH THE STRAIGHT EDGE.

2 TO ADJUST BEND FLOAT TANG.

3 FLOAT BOWL RIGHT SIDE UP. FLOAT SHOULD MOVE FREELY UP AND DOWN WITHOUT CONTACTING THE FUEL BOWL WALLS.

4 STRAIGHTEN BY BENDING THE FLOAT ARMS, IF NECESSARY. (RECHECK THE FLOAT LEVEL ADJUSTMENT.)

FIG. 1 DRY FLOAT LEVEL ADJUSTMENT

1 THROTTLE HELD IN CLOSED POSITION (CURB IDLE). LINK IN PROPER HOLE OF THROTTLE LEVER.

2 MEASURE PUMP LINK AS SHOWN.

3 TO ADJUST BEND LINK

FIG. 2 PUMP STROKE ADJUSTMENT

1 PLACE FAST IDLE SCREW ON HIGH STEP OF CAM.

2 APPLY OUTSIDE VACUUM SOURCE TO FULLY SEAT DIAPHRAGM (15")

3 CLOSE CHOKE GENTLY EXTENDING OUTER STEM UNTIL IT STOPS. (DO NOT PULL CHOKE DIAPHRAGM OFF ITS SEAT.)

4 MEASURE DISTANCE BETWEEN UPPER EDGE OF CHOKE VALVE AND AIR HORN WALL.

5 TO ADJUST BEND LINK

FIG. 3 CHOKE PULLOFF ADJUSTMENT

1 PLACE FAST IDLE SCREW ON SECOND HIGHEST STEP OF FAST IDLE CAM AGAINST HIGH STEP

2 HOLD CHOKE VALVE TOWARD CLOSED POSITION MEASURE DISTANCE BETWEEN UPPER EDGE OF CHOKE VALVE AND AIR HORN WALL.

3 TO ADJUST BEND FAST IDLE ROD.

FIG. 4 FAST IDLE CAM POSITION ADJUSTMENT

1 HOLD THROTTLE LEVER IN WIDE OPEN POSITION.

2 HOLD CHOKE VALVE TOWARD CLOSED POSITION. MEASURE DISTANCE BETWEEN UPPER EDGE OF CHOKE VALVE AND AIR HORN WALL.

3 TO ADJUST BEND UNLOADER TANG.

FIG. 5 UNLOADER ADJUSTMENT

1 AIR CLEANER REMOVED AND VACUUM FITTINGS PLUGGED. TRANSMISSION IN NEUTRAL.

2 PLACE FAST IDLE SCREW ON SECOND HIGHEST STEP OF FAST IDLE CAM.

3 ENGINE RUNNING ADJUST FAST IDLE SCREW TO PROPER R.P.M.

(CHECK INFORMATION ON ENGINE DECAL)

FIG. 8 FAST IDLE SPEED ADJUSTMENT

ADJUSTMENT DATA TABLE

YEAR	FAST IDLE R.P.M.	UNLOADER	FAST IDLE CAM	CHOKE PULL OFF	PUMP ADJ. LINK	FLOAT LEVEL
PASS. CAR 1981-82	1600	.250"	.090"	.150"	1.610"	FLUSH*
TRUCK						
1980 CALIF. M/T	1600	.250"	.080"	.130"	1.700"	FLUSH*
CALIF. A/T	1700	.250"	.090"	.130"	1.610"	FLUSH*
1981 FED. M/T	1600	.250"	.090"	.130"	1.610"	FLUSH*
FED. A/T	1800	.250"	.080"	.130"	1.610"	FLUSH*
CALIF. M/T	1800	.250"	.080"	.130"	1.700"	FLUSH*
CALIF. A/T	1600	.250"	.090"	.130"	1.610"	FLUSH*
1982 M/T	1800	.250"	.080"	.130"	1.700"	FLUSH*
A/T	1600	.250"	.090"	.130"	1.610"	FLUSH*

*FLUSH WITH BOWL COVER GASKET IN PLACE.