

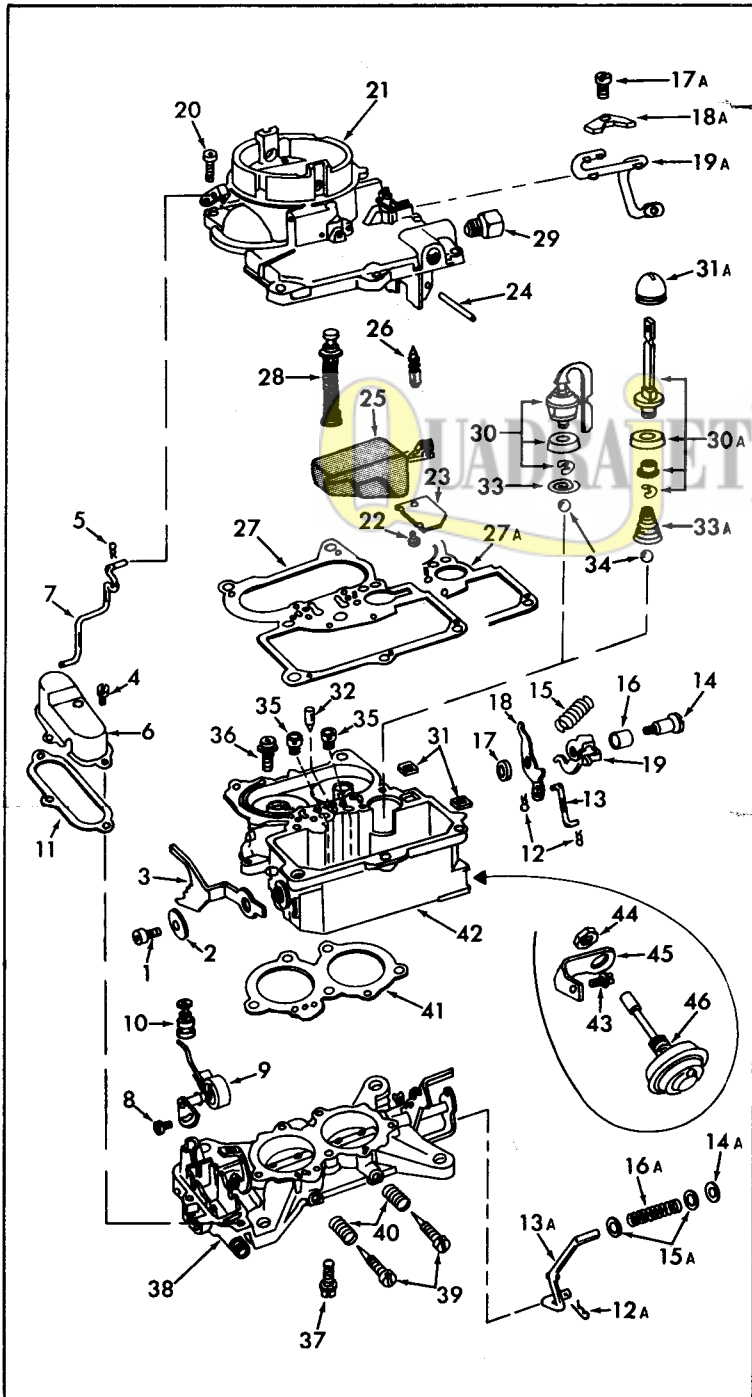
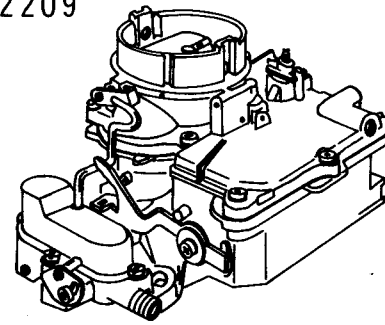
# INSTRUCTION SHEET

## HOLLEY CARBURETOR—MODEL 2209

50-351

### GENERAL EXPLODED VIEW

THE GENERAL DESIGN AND PARTS SHOWN WILL VARY TO INDIVIDUAL UNITS COVERED ON THIS INSTRUCTION SHEET



### DISASSEMBLY

USE EXPLODED VIEW AS A GUIDE. NOTE: FOLLOW (A) SUFFIX NUMBERS WHEN LATE STYLE PUMP (30A) IS USED. THE NUMERICAL SEQUENCE MAY GENERALLY BE FOLLOWED TO DISASSEMBLE UNIT FAR ENOUGH TO PERMIT CLEANING AND INSPECTION. NOTE: FUEL INLET FITTING (29) MUST BE REMOVED FOR THOROUGH CLEANING. REMOVE STAKING FROM BOWL COVER FOR EASY REMOVAL OF POWER PISTON ASSEMBLY (28). POWER VALVE LOCATED IN BOTTOM OF FLOAT BOWL IS NOT TO BE REMOVED.

### NOMENCLATURE

REF. NO.	REF. NO.
1. SCREW - FAST IDLE CAM	22. SCREW & LOCKWASHER - FUEL BOWL BAFFLE
2. WASHER - FAST IDLE CAM	23. BAFFLE - FUEL BOWL
3. CAM - FAST IDLE	24. PIN - FLOAT HINGE
4. SCREW & LOCKWASHER - STAT HOUSING COVER	25. FLOAT & LEVER ASSEMBLY
5. RETAINER - CHOKE ROD	26. NEEDLE - FUEL INLET
6. STAT COVER & GUIDE ASSY.	27. GASKET - BOWL COVER
7. ROD - CHOKE	27A. GASKET - BOWL COVER
8. SCREW - STAT & PISTON LINK ASSEMBLY	28. POWER PISTON ASSEMBLY
9. STAT SPRING & PISTON LINK ASSEMBLY	29. FITTING - FUEL INLET & SCREEN ASSEMBLY
10. PISTON & SCREW - CHOKE	30. PUMP PLUNGER ASSY.
11. GASKET - STAT COVER & GUIDE ASSEMBLY	30A. PUMP PLUNGER ASSY.
12. RETAINERS - PUMP LINK	31. PUMP ROD GUIDES
12A. RETAINER - PUMP LINK	31A. SEAL - PUMP STEM
13. LINK - PUMP	32. NEEDLE - PUMP DISCHARGE
13A. LINK - PUMP OPERATING	33. RETAINER - PUMP INLET BALL
14. SCREW - PUMP LEVER	33A. SPRING - PUMP RETURN
14A. WASHER - PUMP LINK	34. BALL - PUMP INLET
15. SPRING - PUMP OPERATING	35. JETS - MAIN
15A. RETAINERS - PUMP DRIVE SPRING	36. SCREW & LOCKWASHER - THROTTLE BODY TO BOWL (PHILLIPS SCREW)
16. BUSHING - PUMP DRIVE LEVER	37. SCREW & LOCKWASHER - THROTTLE BODY TO BOWL (SLOT SCREW)
16A. SPRING - PUMP DRIVE	38. THROTTLE BODY & SHAFT ASSY.
17. SPACER - PUMP LEVER	39. NEEDLES - IDLE ADJUSTING
17A. SCREW - PUMP ROD CLAMP RETAINER	40. SPRINGS - IDLE ADJUSTING NEEDLE
18. LEVER - PUMP DRIVE	41. GASKET - BODY FLANGE
18A. CLAMP - PUMP ROD	42. FLOAT BOWL & MAIN BODY ASSY.
19. LEVER - PUMP OPERATING	43. SCREW & LOCKWASHER - DASHPOT BRACKET
19A. ROD - PUMP	44. NUT - DASHPOT MOUNTING
20. SCREW & LOCKWASHER - BOWL COVER	45. BRACKET - DASHPOT
21. BOWL COVER ASSEMBLY	46. DASHPOT ASSEMBLY

### CLEANING

CLEANING MUST BE DONE WITH CARBURETOR DISASSEMBLED. SOAK PARTS LONG ENOUGH TO SOFTEN AND REMOVE ALL FOREIGN MATERIAL. USE (1) A CARBURETOR CLEANING SOLVENT, (2) LACQUER THINNER OR (3) DENATURATED ALCOHOL. MAKE CERTAIN THE THROTTLE BODY IS FREE OF ALL HARD CARBON DEPOSITS. WASH OFF IN SUITABLE SOLVENT. BLOW OUT ALL PASSAGES IN CASTINGS WITH COMPRESSED AIR AND CHECK CAREFULLY TO INSURE THOROUGH CLEANING OF OBSCURE AREAS.

CAUTION: DO NOT SOAK STAT SPRING AND PISTON LINK ASSEMBLY (9), FLOAT (25) OR RUBBER PARTS IN SOLVENT.

### REASSEMBLY

REASSEMBLE IN THE REVERSE ORDER OF DISASSEMBLY. NOTE SPECIAL INSTRUCTIONS AND FOLLOW NUMERICAL OUTLINE IN MAKING ADJUSTMENTS.

### SPECIAL INSTRUCTIONS

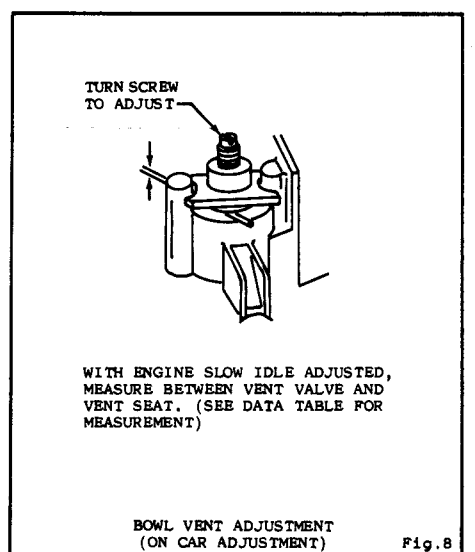
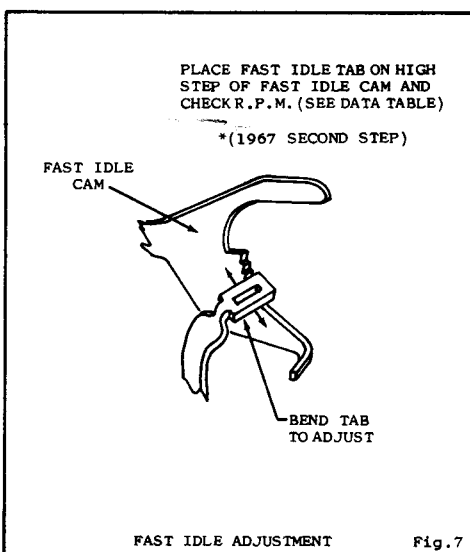
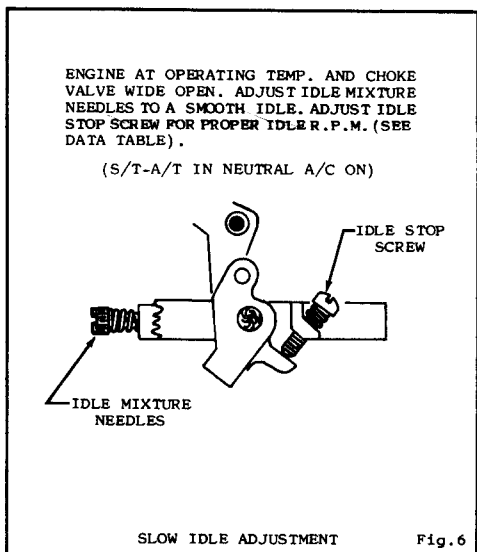
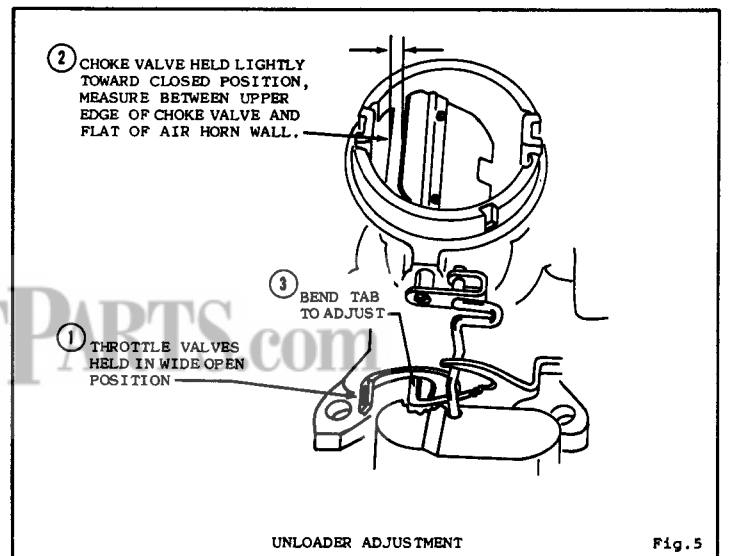
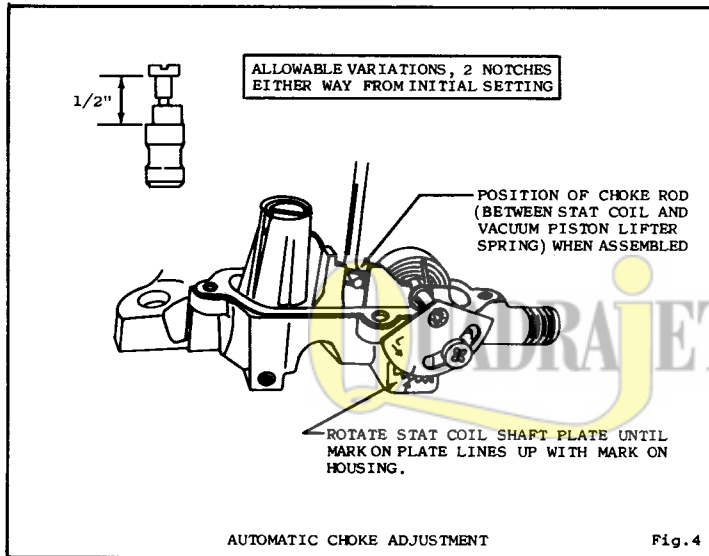
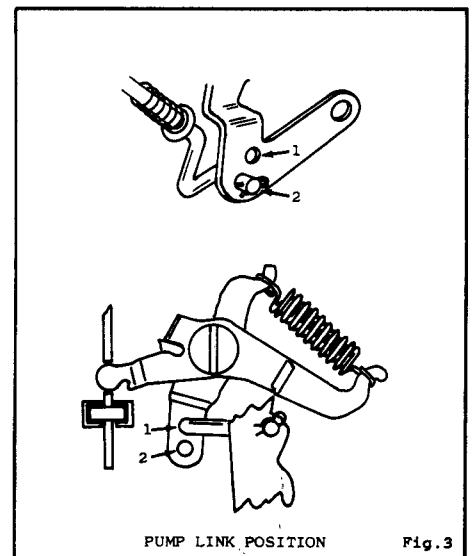
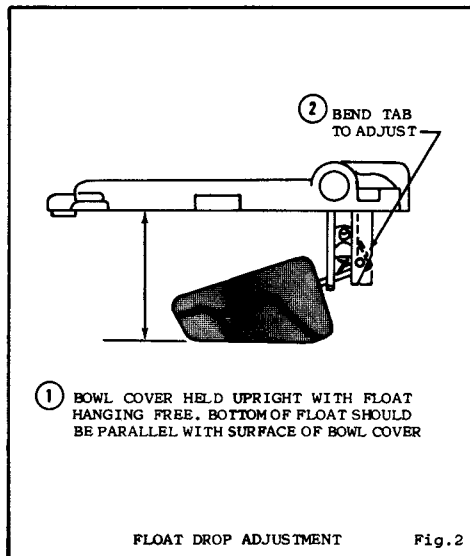
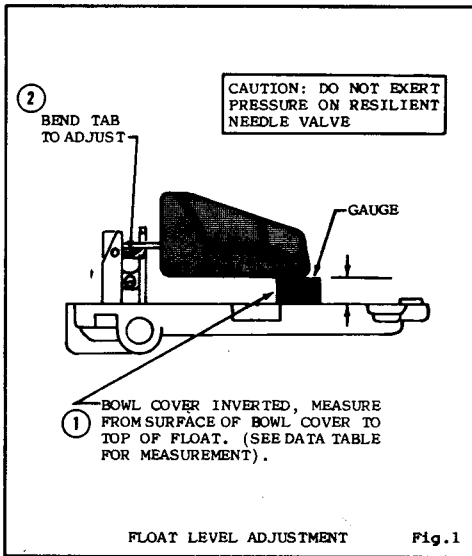
IDLE ADJUSTING NEEDLES (39). TURN NEEDLES IN LIGHTLY UNTIL SEATED, THEN BACK OUT 1 1/2 TURNS.

POWER PISTON INSTALLATION (28). LIGHTLY STAKE CASTING AROUND WASHER.

PUMP CUP INSTALLATION. REMOVE E CLIP ON PUMP ASSEMBLY (30 OR 30A) TO REPLACE PUMP CUP.

CHOKE ROD (7). WHEN ROD IS IN PLACE, LOWER END MUST BE BETWEEN STAT SPRING AND VACUUM PISTON LIFTER SPRING AS SHOWN IN FIGURE 4, CHOKE ADJUSTMENT.

# ADJUSTMENTS



## ADJUSTMENT DATA TABLE

YEAR	MAKE	FLOAT LEVEL	PUMP LINK POSITION	AUTOMATIC CHOKE	UNLOADER	IDLE SPEED R.P.M. HOT	R.P.M. FAST	BOWL VENT	DASHPOT SETTING
1965-66	AMERICAN MTRS. 287", 327" ENG.	11/32"	NO.1	INDEX	3/16"	550 S/T	1800	5/64"	5/32"
1967	290", 343" ENG.	11/32"	NO.1	INDEX	3/16"	500 A/T 600N	1800 1600*	5/64"	5/32"
1965-66	KAISER JEEP 327" ENGINE V8	9/32"	NO.2	INDEX	3/16"	550 S/T 500 A/T	—	—	5/32"