

CLEANING

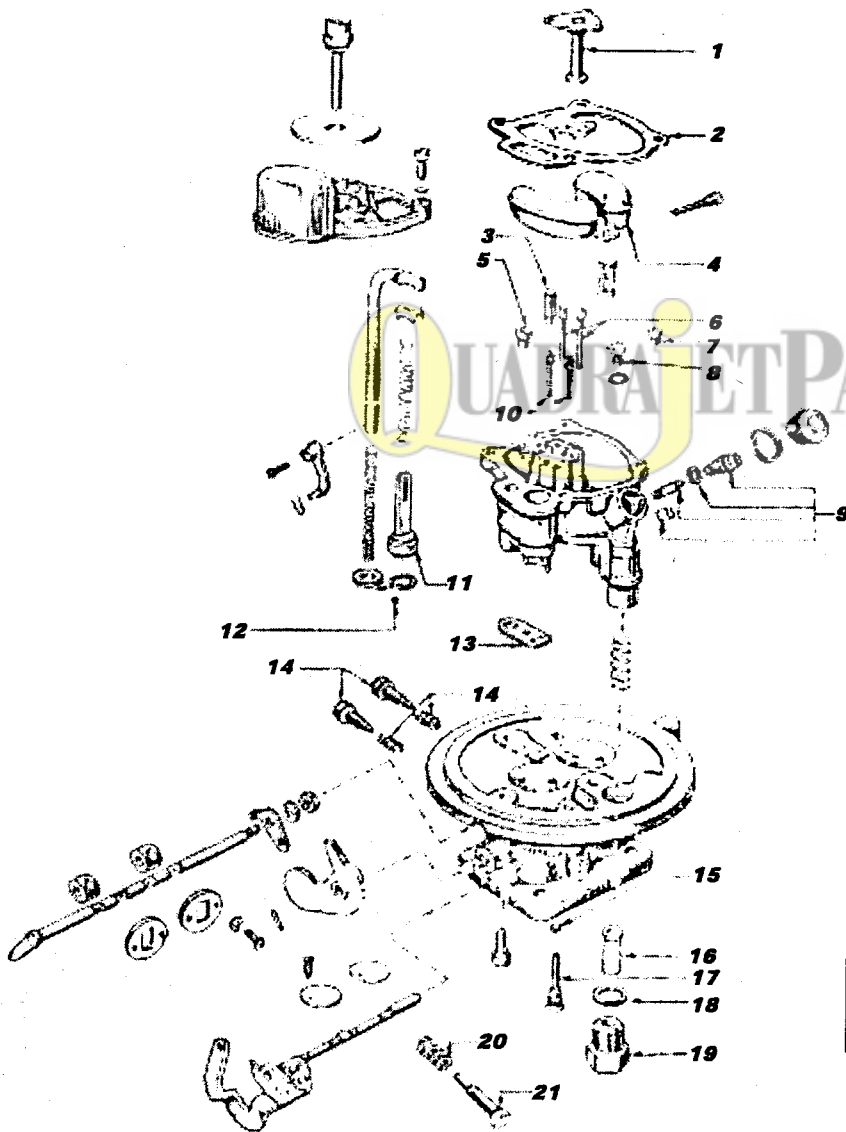
Cleaning should be done with carburetor disassembled. Soak parts long enough to soften and remove all foreign material. Use a cleaning solvent and remove hard carbon deposits. Rinse with clean solvent and blow all passages with compressed air. Reassemble in reverse order of disassembly. When cleaning with solvent do not soak or spray rubber, plastic or electrical components. The pump assembly must be flared then soaked in clean oil for several minutes before installation. Note: The exploded view is typical and may differ slightly from carburetor being serviced and does not reflect contents of kit.

FLOAT ADJUSTMENT

Invert main body allowing the weight of the float to rest against the seated needle. Measure $5/32"$ or $.156"$ from the surface of the body to the crown of the float. If adjustment is needed, bend the tang. For float drop be sure it drops enough so that needle comes off seat but not so much as to allow to become cocked or to fall out.

IDLE ADJUSTMENT

Screw in the idle adjustment screw until seated hand tight, then open up $1 \text{ turn} \pm \frac{1}{2}$ turn. For richer mixture turn out $\frac{1}{4}$ turn at time until correct idle is reached. Standard transmission in neutral, automatic transmission in drive.



NOMENCLATURE

- | | |
|------------------------|------------------------|
| 1. Piston & Stem Assy | 12. Ball Accel Pump |
| 2. Bowl Cover Gsk. | 13. Body Gsk |
| 3. Needle | 14. Needle (Idle Adj.) |
| 4. Float | 15. Ball Carb Press |
| 5. Main Jet | 16. Screen, Retainer |
| 6. Main Well Tube Assy | 17. Retainer |
| 7. Main Jet | 18. Inlet Gsk |
| 8. Valve Power Jet | 19. Inlet Fitting |
| 9. Needle Seat Assy | 20. Spring Th adj. |
| 10. Tube Assy | 21. Throttle Screw Adj |
| 11. Pump Piston Assy | |